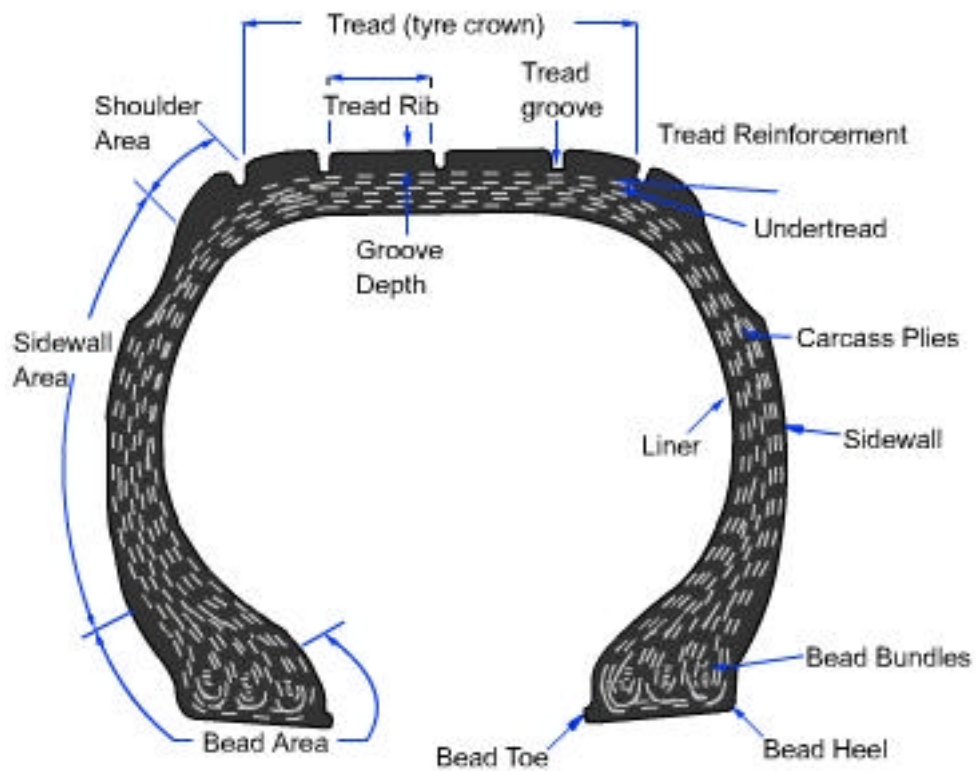




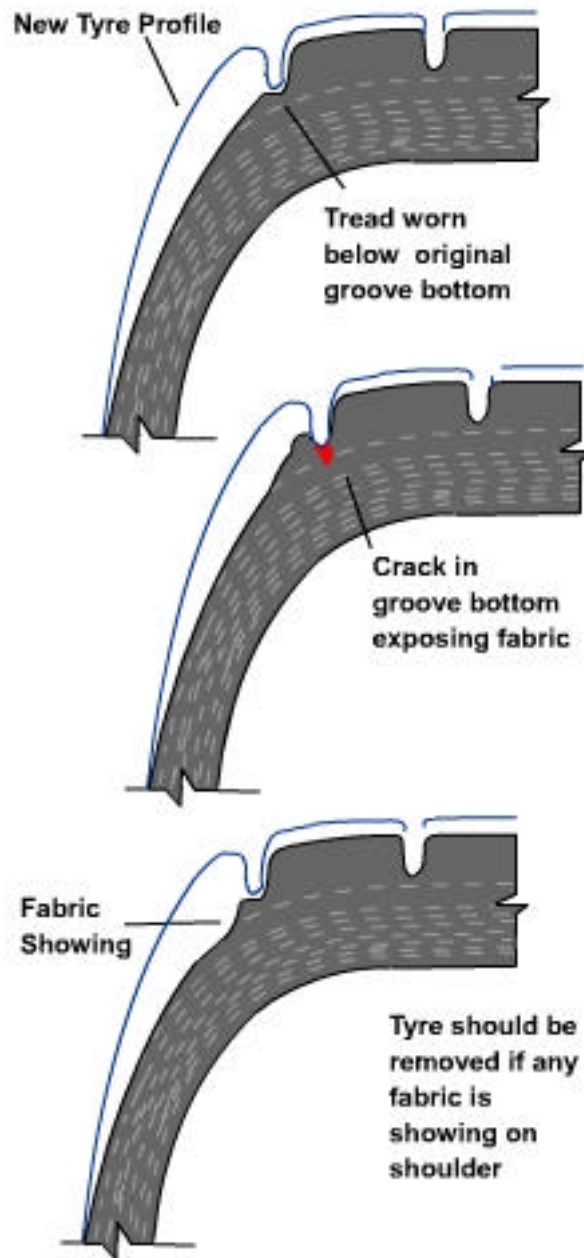
## *Tyre Wear Guidelines*

### **Tyre Cross Section (Typical)**





**TYRE WEAR**

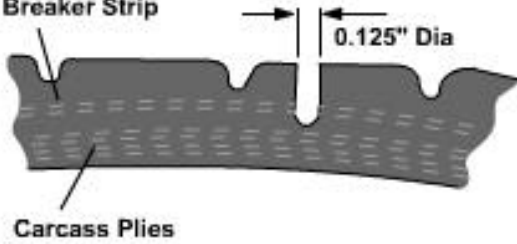




**PUNCTURE**

Tread Reinforcement / Breaker Strip

Tyres with holes larger than 1/8" (0.125) or holes penetrating into the carcass plies or belt plies are unserviceable.

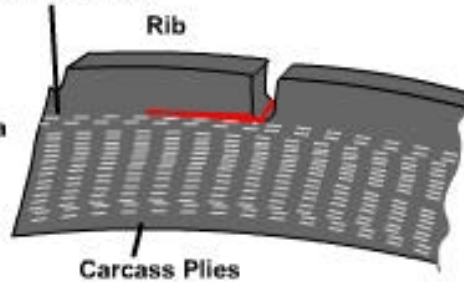


**RIB UNDERCUTTING**

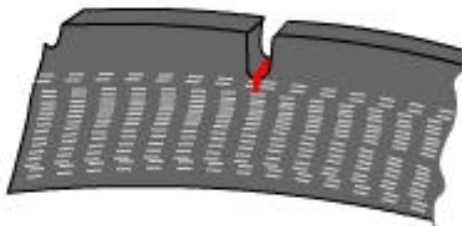
Tread Reinforcement

Rib

Tyres with a crack that extends below a tread rib are unserviceable



**GROOVE CRACKING**

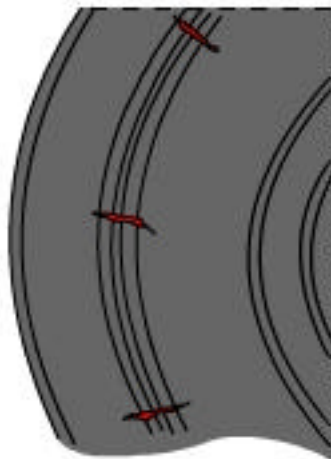


Tyres with circumferential cracks at the bottom of the tread grooves are unserviceable if they expose any fabric

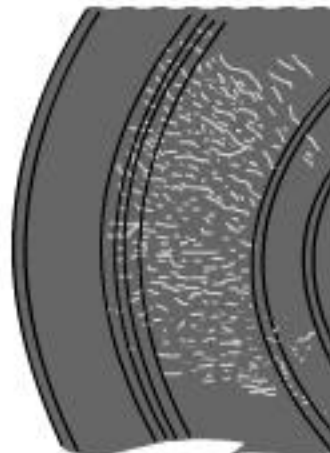
**CIRCUMFERENTIAL CRACK**



**RADIAL CRACKS**



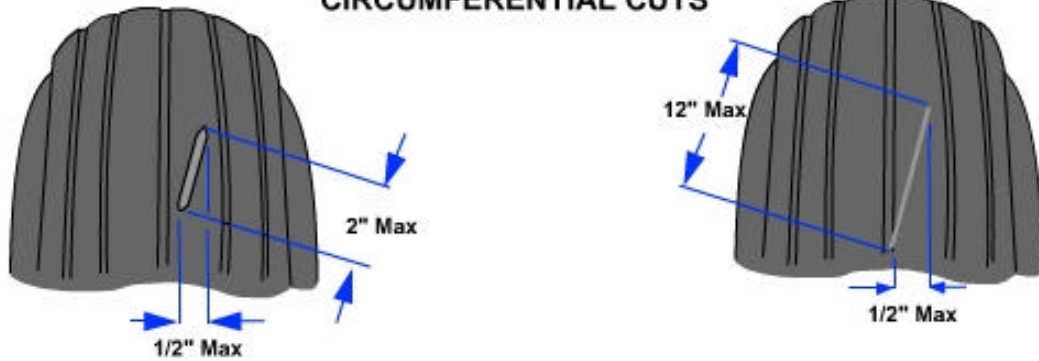
**OZONE AND/WEATHER CHECKING**



Tyres with circumferential, radial cracks, Ozone / Weather checking in the sidewall or shoulder that expose fabric are unserviceable

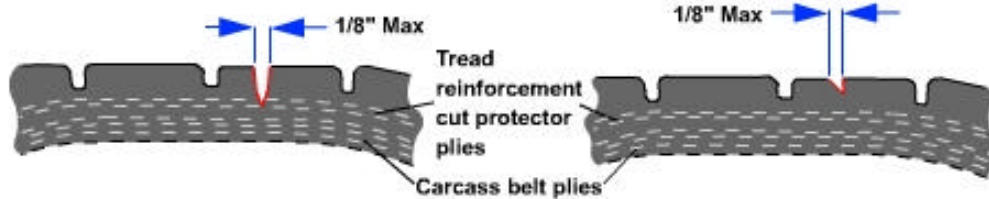


**CIRCUMFERENTIAL CUTS**



Cuts penetrating the tread reinforcement / cut protector plies are not serviceable. If a cut penetrates the carcass plies (bias) or belt plies, (radial), the cut is not contained in one rib.

Cuts not exposing fabric are unserviceable if they exceed these limits



**OPEN TREAD SPLICE**



**TRANSVERSE CUTS**



Tyres with an open splice are not serviceable. A closed tread splice will appear as a thin line crossing the tread ribs. Transverse cuts contained within a rib and penetrating into the carcass plies (bias) belt plies (radial) are not serviceable. Cuts extending across a rib from groove to groove that are deeper than the groove are not serviceable.



## TREAD FLAKING, CHIPPING AND CHUNKING



Tyres with flaking, chipping or chunking are not servicable if any fabric is exposed

## PEELED RIB

Tyres with peeled ribs are unservicable



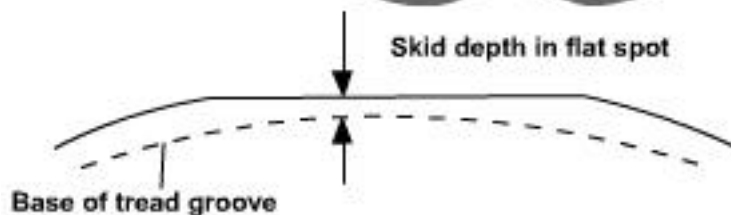
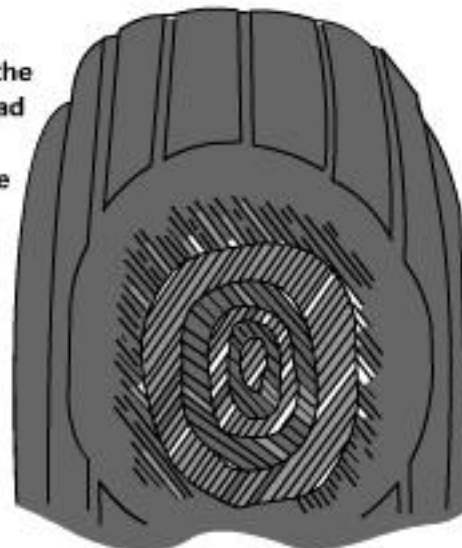
## THROWN TREAD

Tyres with thrown tread are unservicable

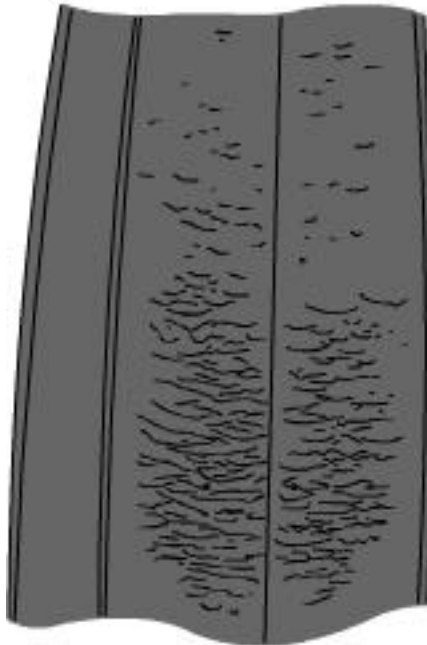


## FLAT SPOT

Tyres with a flat spot are not servicable if the flat spot exposes tread reinforcement or cut protector plies or tyre balance is affected







### **Chevron Tearing**

Tires with chevron cuts in the tread are not servicable if any of the single cut limits are exceeded or chunking occurs which exposes the fabric.

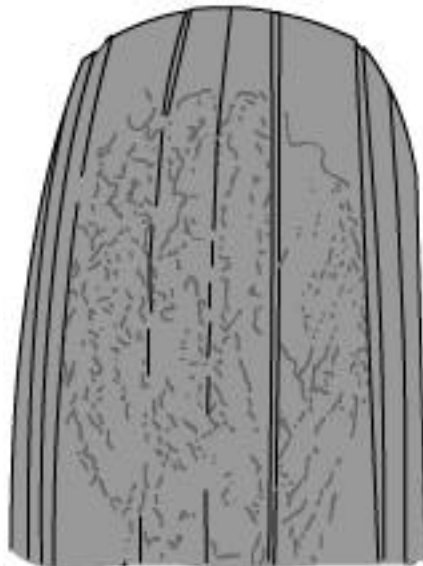


### **Non Continuous Cuts Across Rib**



### **Continuous Cuts Across Rib**

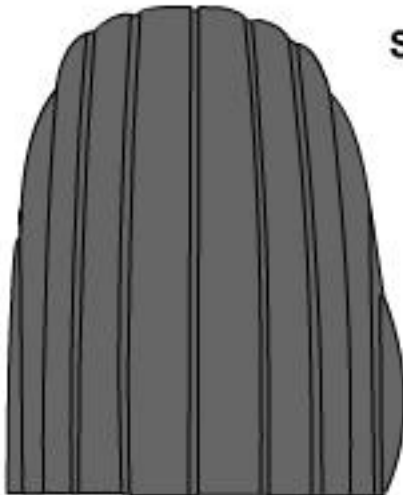
## **ICE SKID BURN/TREAD RUBBER REVERSION**



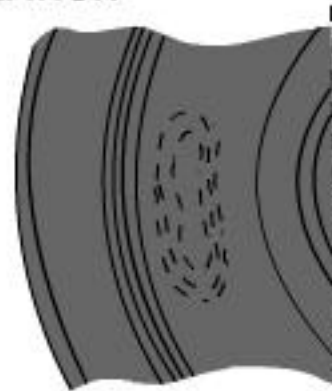
Tyres with ice burns/tread rubber reversion are not servicable if the damage exposes the tread reinforcement or cut protector plies or tyre balance is affected



### SIDEWALL SEPERATION



Tyres with blisters or bulges in the sidewall are not servicable, remove from service immediately



### TREAD SEPERATION



Tyres with blisters or bulges in sidewall are unserviceable

